



LED LIGHTING



LED

LED (Light Emitting Diode) technology is now the most eco-friendly form of lighting in the industry. Cool, low-cost, long-life and flexible; LED technology is the new and growing green choice for all types of lighting.



PRESCOLITE LED EVOLUTION



LD4
JUNE 2005



D4LED/D6LED
SEPTEMBER 2006



D6LED2
JUNE 2007



RDPS6LED
JUNE 2007



LD4SS
LD4PS
JUNE 2007



LD6D
LD6S
LD6P
JUNE 2007



SLLED1/2/3
SEPTEMBER 2008



RLF6LED/RLF8LED
OCTOBER 2010



LF6LED7/RLF8LED7
JANUARY 2011



D2LED
MAY 2011



LF4LED
JUNE 2011



LF8LED
JUNE 2011

C O N T E N T S

2	LED Introduction
4	Good, Better, Best
6	D2LED Introduction
8	D2LED
10	D4LED3 & D4LED4
12	D6LED3 & D6LED4
14	LF4LED, LF6LED, & LF8LED
16	LB6LED
18	Retroficient LED Downlights
20	Lutron Dimming Option
22	AKT6LED
23	AKTSLED
24	SDPS6LED & RDPS6LED
25	LD4 & LD6
26	SLLED Series
28	Trims
29	LED Recycle Program



AKT6LED
JUNE 2009



D4LED3&4
D6LED3&4
OCTOBER 2009



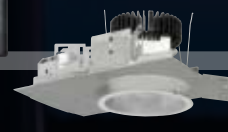
LD6LED3&4
RDPS6LED3&4
NOVEMBER 2009



RD6LED
JANUARY 2010



AKTSLED
APRIL 2010



LF6LED5
JULY 2010



LB6LED
JULY 2010

LED

1 LED LIGHT ENGINE

The heart of LED lighting is the LED light engine, an integrated reflector array of LEDs designed around each LED to produce a uniform distribution.

2 PARABOLIC LED REFLECTOR MODULES

The LED light engine features ten parabolic LED reflector modules. Each incorporates the patented application of Prescolite's American Matte™ finish to produce uniform illumination. U.S. Patent #6.254.256

3 DIE CAST ALUMINUM HEAT SINK

The LED light engine is mounted directly to a heavy aluminum heat sink, engineered to dissipate the heat generated by the LED array to ensure optimal life and lumen maintenance.

4 REFLECTOR

High purity spun aluminum reflector provides 45° cutoff for a glare-free ceiling appearance.

5 REFLECTOR VENTING

Upper reflector is vented above the LED light engine for thermal management of the LED array.

6 LED DRIVER

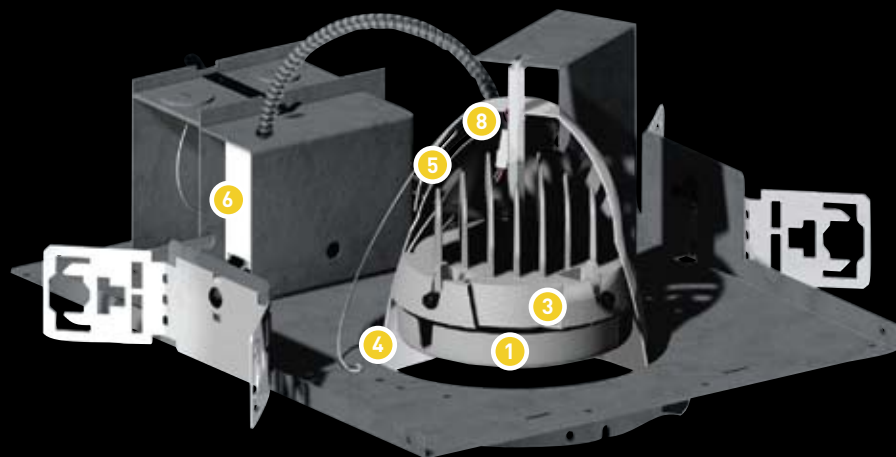
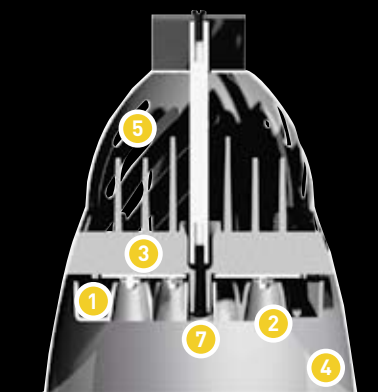
LED products feature drivers specially chosen to meet the long life expectations of Prescolite's LED fixtures

7 REFLECTOR RETENTION

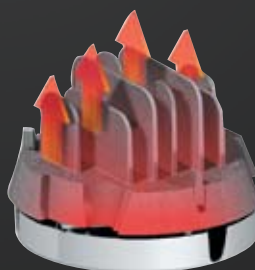
Reflector/LED light engine assembly is easily installed and retained by a single, tamper-resistant screw. Tool included.

8 WIRING QUICK-CONNECT

The LED light engine is electrified via low voltage leads to the driver and a simple wiring quick-connect.



D6LED



LED HEAT SINK

Although LEDs generally operate cooler than conventional light sources, the heat they produce can dramatically affect their life if not properly vented. Prescolite® LED lighting fixtures feature highly engineered die cast aluminum heat sinks mounted directly to the top of the LED light engines to efficiently dissipate heat. This assures the minimum 50,000* hour life of the LED is achieved.

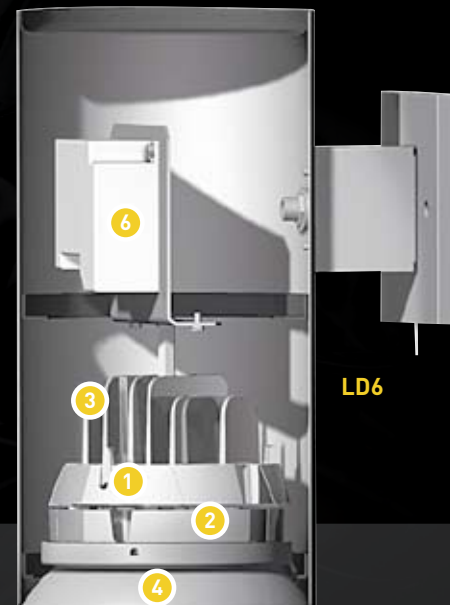
* At 70% Lumen maintenance.



SDPS6LED



LD4



LD6

LEDs, unlike ordinary lamps, don't have a filament that will burn out, and they don't get very warm. They are illuminated by the movement of electrons in a semiconductor material, and they last just as long as a standard transistor.

A VARIETY OF LED COLLECTIONS FOR COMMERCIAL, LIGHT COMMERCIAL INDUSTRIES

RESIDENTIAL

LiteBox®

Contractors – LiteBox LB6LED – With 2700K or 3500K CCT options, the LB6LED offers light output and distribution comparable to a 65W BR30. Features include excellent glare control and optical cutoff, as well as color quality and a warm white color temperature to create enjoyable illuminated environments. Additionally, the LB6LED has an 80+ CRI for light commercial and residential applications.



DESIGN BUILD- LiteFrame

LiteFrame®

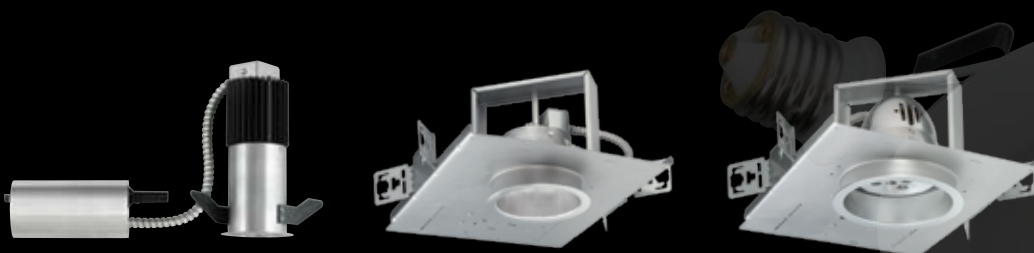
Design Build Contractors – LiteFrame LED collection – Optimal life and lumen maintenance are at the forefront of our LiteFrame LED design. Available in a variety of aperture sizes – 4-inch, 6-inch and 8-inch – this line of commercial grade LED downlights feature remote phosphor technology and a new EM capability. Options are also available with 1100-2000 lumen modules, which do not require additional fans to provide cooling benefits. Compared to traditional CFLs, LiteFrame LED with remote phosphor technology offers similar performance, while reducing power density, maintenance costs and energy consumption.



ARCHITECTURAL

Architektur

Architects and Designers – Architektur D2/D4/D6LED – These 2", 4" and 6" specification grade LED downlights offer a great selection of color temperatures and CRI options for lighting designers. There are high efficacy versions that meet strict energy code requirements and high output options suitable for applications that require very high light levels.





DIFFERENT PROJECTS, DIFFERENT LED SOLUTIONS

Prescolite understands that different projects require different approaches, resources and tools.

That's why we offer a variety of LED products: To assist you in accommodating a wide variety of needs.

Each lighting line provides a high quality, efficient LED product, yet varies in the amount of light distribution, light output and wattage consumption, allowing you to decide which is right for you for your next project.

From architects and designers to distributors and contractors, Prescolite can serve as your expert resource on LED solutions.

D2LED ✓

PRESCOLITE'S REVOLUTIONARY 2" LED DOWNLIGHT

Until recently, small aperture 2" LED products were only suitable for niche or accent lighting. With Prescolite's revolutionary 2" LED downlight – D2LED – it's now possible to experience a new dimension in lighting design for commercial applications.

Designed around the precision Xicato brand light engine, D2LED offers the opportunity to create clean ceilings with minimal obtrusiveness, while providing general, workable light output in new construction and retrofit applications, such as:

D2LED can also provide task and accent lighting levels.

LOBBIES



PROFESSIONAL / OFFICES



HOSPITALITY



XICATO MODULE

D2LED is designed around the premium Xicato light engine that:

Uses remote phosphor technology

Offers color consistency (2-step MacAdam Ellipse) from fixture to fixture

Is thermally manageable and in a small form factor

IP66 rated wet location

Features optical consistency



D2LED – CREATED TO MEET THE NEEDS OF THE LIGHTING DESIGN & ARCHITECTURAL COMMUNITY

With D2LED, lighting designers, and architects can have it all – minimal aperture size, efficiency and premium optics – when lighting highly aesthetic environments.

UNOBTRUSIVE

Designers can create clean ceilings with minimal obtrusiveness.

FLEXIBLE

One fixture is designed to work in new construction or retrofit.

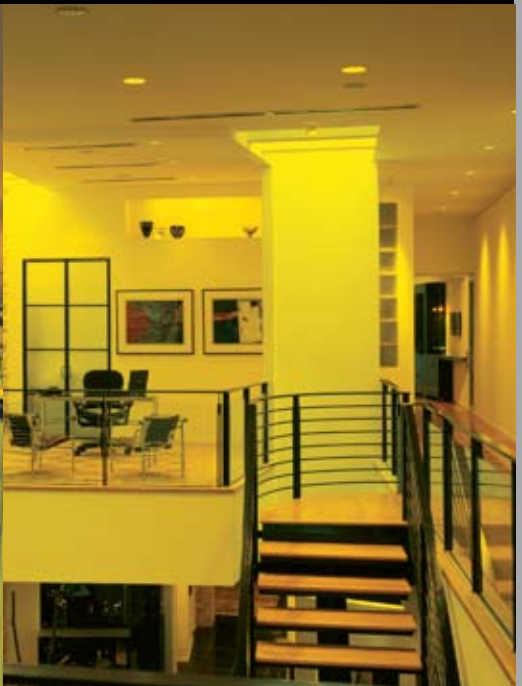
RETAIL



LOUNGE OR BAR AREAS IN RESTAURANTS



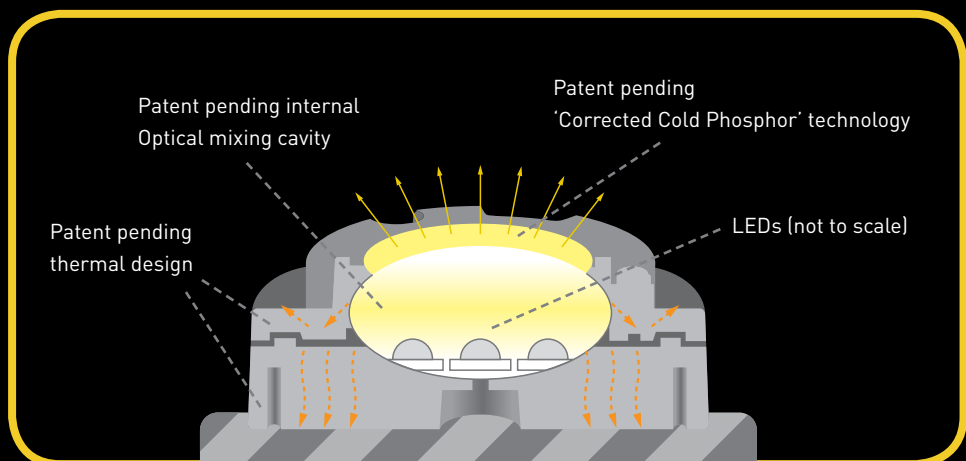
HIGH-END RESIDENTIAL



7

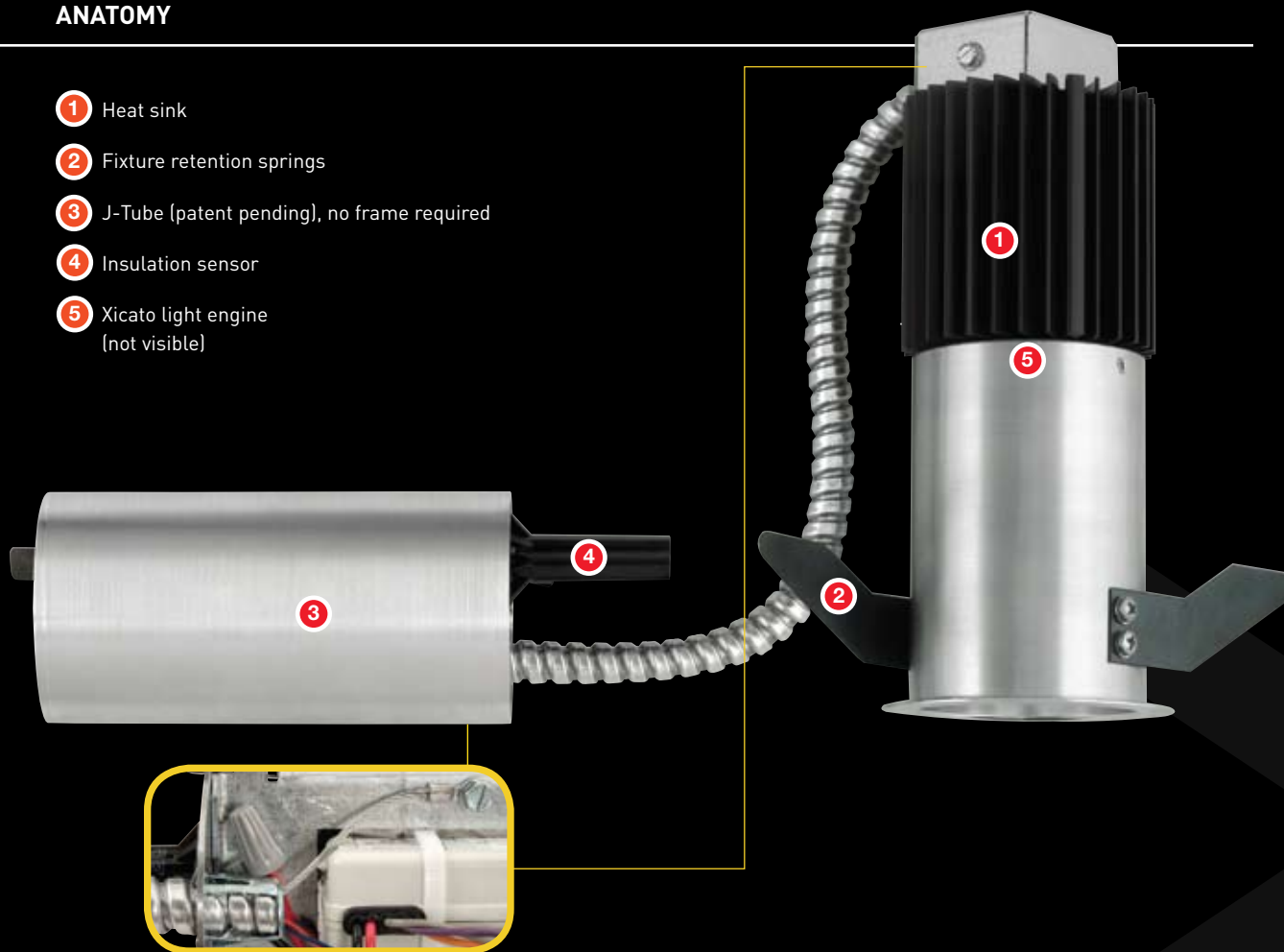
XICATO XSM TECHNOLOGY

The color corrected cold phosphor technology matches blue LEDs to a phosphor disk to lock in color and provide lighting professionals with the consistency required for architectural applications.



ANATOMY

- ① Heat sink
- ② Fixture retention springs
- ③ J-Tube (patent pending), no frame required
- ④ Insulation sensor
- ⑤ Xicato light engine (not visible)



D2LED also features a strain relief cable, to prevent any undue pressure from being placed on wire connections.

D2LED

Product Family:	Architektür
Type:	LED Recessed
LED Configuration:	2" Open Reflector/Light Engine Assembly with Xicato 1300 Lumen module
Color Temperature:	3000K, 4000K
CRI:	80+ Nominal
Dimming:	0-10V to 10%
Voltage:	120V or 277V
Input Watts:	20W

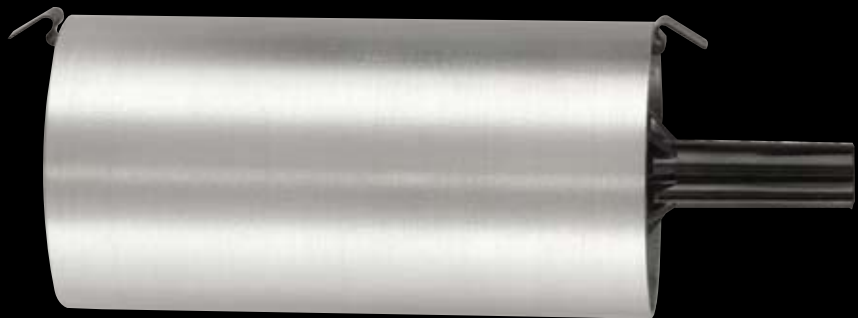
PATENT PENDING J-TUBE

Prescolite's patent pending J-Tube design:



Features ability to through branch (2 in/2 out).

Arlington connector not shipped with fixture



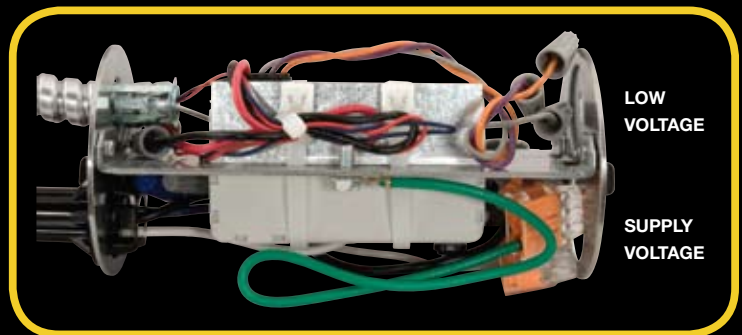
Insulation detector provides thermal protection



Accessible/removable from below ceiling



Quick connects



Provides for separation of line and low voltages

Architektūr



D4LED3 & D4LED4 ✓

Advancements in LED technology have allowed Prescolite to create and introduce the next evolution of 4" and 6" specification grade LED downlights. As the first U.S. company to introduce a commercial LED downlight to market, D4LED and D6LED downlights are now available in both high efficacy (D4LED3 and D6LED3) and high output (D4LED4 and D6LED4) luminaires. These new alternatives include a broad array of color temperatures, brightness control, and beam spreads, allowing specifiers a choice in making individual lighting selections that best fit the application at hand. Additionally, the LED3, high efficacy version, meets strict energy code requirements, while the LED4, high output option, is suitable for applications that require very high light levels with efficacies that still rival many compact fluorescent products. ENERGY STAR® qualified in select configurations.



HIGH EFFICACY D4LED3:

To meet energy code requirements and achieve higher lumens per watt, the D4LED3 features a 4" LED 5W housing for high efficacy benefits, up to 47 lumens per watt.

HIGH OUTPUT D4LED4:

When higher light levels are needed, options in higher outputs (up to 497 lumens) can be ideal for accent, task, or high ceiling applications. The D4LED4 provides a 4" LED 12W (120V or 277V) fixture for high output capabilities.



D4LED3

Product Family:	Architektür
Type:	LED Recessed
LED Configuration:	(4) High Brightness 1-watt white LEDs
Color Temperature:	2700K, 3500K, 4000K, 5000K
CRI:	70 Nominal or 90+ Nominal
Dimming:	Not Available
Voltage:	120V
Input Watts:	6W

D4LED4

Product Family:	Architektür
Type:	LED Recessed
LED Configuration:	(4) High Brightness 2.5-watt white LEDs
Color Temperature:	2700K, 3500K, 4000K, 5000K
CRI:	70 Nominal or 80+ Nominal
Dimming:	0-10V Dimming to 20% Lutron HDM Dimming to 1%
Voltage:	120V/277V
Input Watts:	13W

VARIETY OF OPTICS, CRI OPTIONS AND BEAM CONTROL

LED3 and LED4 downlights provide a variety of optics suitable for a broad array of lighting applications and also offers enhanced flexibility, including:

- Greater selection of color temperatures (2700K, 3500K, 4000K and 5000K)
- 70, 80, and 90 CRI options
- 120V, 277V housings
- Spot (18°), medium (25°), wide (35°), or flood (45°) (D6 only) distributions to accommodate any application.
- Dimming options available from 100% to 1%



Architektur



D6LED3 & D6LED4 ✓

Prescolite's Architektur D6LED series includes options in a 6" specification grade LED downlight that offer superior brightness control with energy savings and low maintenance costs. While the housing construction, light engine retention, thermal management and optical control remain the same, these innovative LED downlights are now offered in both high efficacy and high light output options. ENERGY STAR qualified in select configurations.



D6LED3:

6" LED 14W housing (120V or 277V) features high efficacy benefits (up to 57 lumens per watt), to meet the strictest of energy code requirements.

D6LED4:

6" LED 28W housing (120V or 277V), which provides high output capabilities, up to 1274 (35K, mid CRI spot lens) lumens.

In addition to high efficacy and high output alternatives, the 6" specification grade LED downlights offer a greater variety of color temperatures and CRI options, as well as a choice of 120V or 277V. The addition of the 277V housing eliminates the step down transformer, which can lead to inherent losses of power.



D6LED3

Product Family:	Architektür
Type:	LED Recessed
LED Configuration:	(10) High Brightness 1-watt white LEDs
Color Temperature:	2700K, 3500K, 4000K, 5000K
CRI:	70 Nominal or 90+ Nominal
Dimming:	0-10V Dimming to 20% Lutron Dimming to 1%
Voltage:	120V or 277V
Input Watts:	14W

D6LED4

Product Family:	Architektür
Type:	LED Recessed
LED Configuration:	(10) High Brightness 2.5-watt white LEDs
Color Temperature:	2700K, 3500K, 4000K, 5000K
CRI:	70 Nominal or 80+ Nominal
Dimming:	Lutron HDM Dimming to 1%
Voltage:	120V or 277V
Input Watts:	28W

13



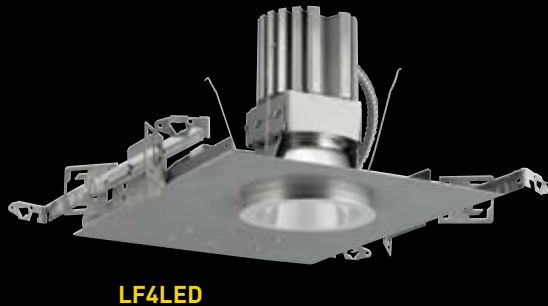
UPGRADED LIGHT ENGINE ASSEMBLY

The D4LED and D6LED series features a high efficacy LED light engine, as well as a variety of color temperatures - 2700K, 3500K, 4000K and 5000K. Secured to an integral die cast aluminum heat sink for excellent thermal management, the LED downlights have an optimal life and lumen maintenance (50,000 hours minimum at 70% average lumen maintenance).

"While Prescolite has provided LED options in downlights for many years, our primary objective is for us to continually improve our designs while using the newest technology available to meet the needs of the specification and architecture communities,"

Ron Newbold
VP of Prescolite Brand Management

LiteFrame LED



LF4LED



LF6LED



LF8LED

LF4LED, LF6LED, & LF8LED ✓

LiteFrame LED - 4", 6", & 8" remote phosphor commercial grade LED downlights

Designed for optimal life and lumen maintenance, LiteFrame LED downlights:

- Utilizes the 1100 Lumen (LED5) and 2000 Lumen (LED7) Fortimo modules
- Deliver more than 50 lumens per watt (fixture efficacy)
- Offers a minimum 50,000-hour life at 70% lumen maintenance

Available in three different color temperatures, 3000K, 3500K and 4000K, LiteFrame LED also features the following benefits:

- Light Engine utilizes Philips Fortimo remote phosphor technology for color consistency fixture to fixture
- Universal 120-277V high efficiency LED driver with 0-10V dimming standard
- Over 50 Lumens per watt delivered
- Glare free optical control
- Shipped with pre-installed Light Commercial bar hangers.
- Photometrics tested per IESNA-LM-79-2008 standards
- Non-IC rated. Suitable for wet locations and through wiring (Damp location for EM)
- Luminaires are certified by a National Recognized Testing Lab (NRTL), either UL or CSA.
- Emergency option now available.

With an innovative optical design that combines high efficacy with a 45 degree cut-off and 1.2 spacing to mounting height, LiteFrame LED provides the opportunity to illuminate more space with fewer fixtures and less overall power. With industry best brightness control, these downlights provide a great solution when complying to ever tightening ASHRAE power density requirements.



55 DEGREE
PHOTO ANGLE



50 DEGREE
PHOTO ANGLE

PRODUCT INSTALLATION

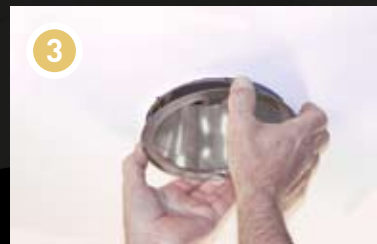
The LF6LED housing comes with a pre-wired J-box and snap-on cover for easy access and tool-less installation.

To install, follow the 3 easy steps either above or below the ceiling:

3 STEP PROCESS:



Place Connector Into LED Module, Snap Cover On



Put Torsion Springs Into Brackets

Push Into Ceiling



LED MODULE

FORTIMO
by **PHILIPS**

PHILIPS FORTIMO – REMOTE PHOSPHOR TECHNOLOGY

LED modules use high brightness royal blue LEDs
White light achieved when illuminating remote lens with phosphor film layer
Remote location of lens exposes phosphor to less heat, increasing life and color quality
Offers increased efficiency and better uniformity and color consistency
Less susceptible to heat degradation than phosphor applied directly on the chip

LiteBox®



LB6LED ✓



LB6LED335K WH

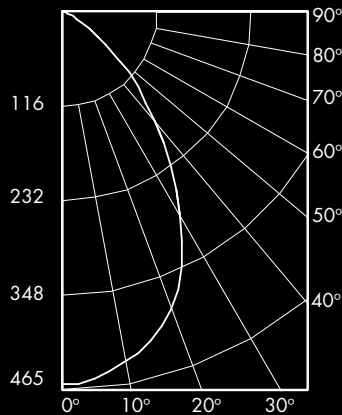
LED Light Engine: (9) LED Array
3500K 80+ CRI

System Wattage: 15

Fixture delivered lumens: 685

Fixture Efficacy: 43

Spacing Criteria: 1.0



LB6LED3 – 6" LED downlight for new construction and retrofit applications

Offering light output and distribution comparable to a 65W BR30 and most 18 watt CFL downlights, the LiteBox LB6LED3 features:

- Excellent glare control and optical cutoff
- Color quality and a warm white color temperature to create enjoyable illuminated environments
- Dimming capabilities to 15%, allowing operators to set different mood for retail, hospitality and high-end residential spaces using electronic low voltage or triac controls.
- Wet location standard
- UL/cUL classified for use in most competitive 6" cans
- ENERGY STAR® qualified, meets California Title 24 with DBXQL

The LB6LED has a minimum 50,000-hour life based at 70% lumen maintenance. Consuming a significantly less power compared to a 65W BR30, it also offers sustainable benefits and dramatically reduces maintenance and service costs over incandescent sources.

TRIM OPTIONS



White (WH)



Zet with White Flange (ZWT)



Black with White Flange (BLWT)

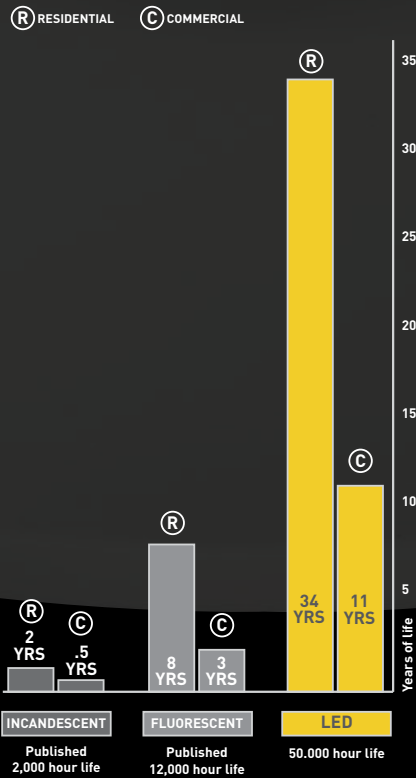


Zet (Z)

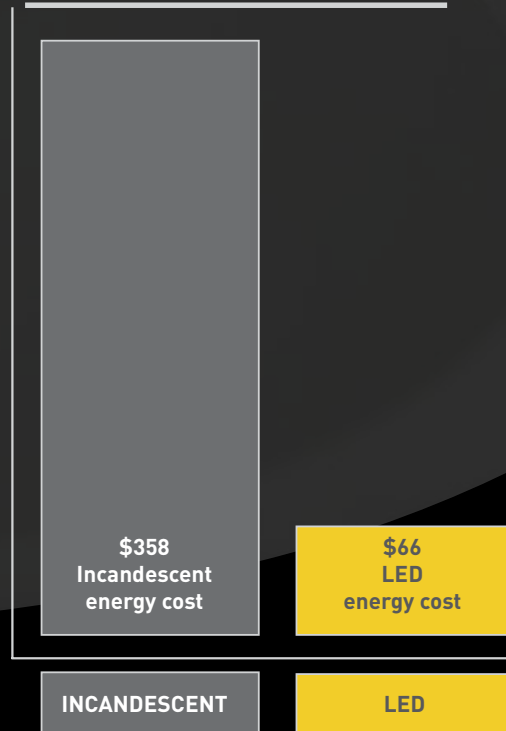


Black (BL)

LED: Extended Product Life



LED: Saves \$ on Energy Costs



Direct electrical cost for 50,000 hours of operation at 0.11/kwh



A key enhancement to this LED downlight is the diffusion of diode sources. The acrylic lens diffuses the LEDs to effectively create a soft visible source, while the regressed reflector and minimal optical aperture result in significantly reduced glare compared to traditional incandescent sources.

With white flange, 2700K or 3500K CCT options, target markets include residential and light commercial applications for both new construction and retrofit.

Additionally, Prescolite offers a 3-year warranty for IC rated applications and a 5-year warranty for non-IC applications.

RD6LED



RLF6LED/RLF8LED



INSTALLATION

Retroficient is Fast and Simple to Install – In less than five minutes and 6 simple steps you can install a product that is a great solution for retrofit projects.

1 Make Wire Connections



2 Install Supply Wires To J-Box



3 Reinstall Ballast Cover Plate



5 Secure Housing into Ceiling with Slide Bars



6 Install Lamp and Reflector





EXCLUSIVE 5-AXIS J-BOX

To accommodate for obstacles that might be above the ceiling, the orientation of Prescolite's patent-pending tool-less J-box is very flexible. It includes 5 axis points and an arm that allows for full range of movement.

Retroficient offers:

- Energy savings for building upgrades
- Quick and easy installation that can be done from below the ceiling
- With new, more aggressive mandates for energy conservation in existing facilities, as well as an increased emphasis on the importance of energy-efficient lighting sources,

4 Mount Housing Assembly Into The Aperture

*Note: The SD housing option for small diameter apertures installs differently. See www.prescolite.com for installation instructions for this option.



Lutron Dimming Option

Hi-lume® LED Lutron dimming options are available for D4LED4, D6LED3 and D6LED4. With advanced dimming capabilities from 100% to 1%, Prescolite's premium downlights with Lutron's high performance dimming is a powerful combination.

Designed as a unique solution to challenging environments, Prescolite's LED downlights are ideal alternatives for niche settings that require sophisticated lighting control systems and offer a number of benefits, including:

- Spot (18°), medium (25°), flood (35°), or wide flood (45°) for D6LED (45°)
- 70, 80, and 90 CRI options
- A variety of color temperatures (2700K, 3500K, 4000K and 5000K)
- Premium glare control
- Energy savings
- Years of maintenance-free operation



A POWERFUL COMBINATION
 Prescolite's premium downlights – combined with Lutron's high performance dimming – offers a sophisticated control system with dimming capabilities from 100% to 1% for a variety of interior spaces.

D6LED4HDM-6DLED435K8MD25

Ceiling to Floor Height (ft)	Single Unit, Initial Footcandles, 30" Work Plane						
	Nadir		10°		20°		30°
	FC	FC	Dia (ft)	FC	Dia (ft)	FC	
12	45	28	3	8	7	2	11
14	31	19	4	6	8	1	13
16	22	14	5	4	10	1	16
18	17	11	5	3	11	1	18
20	13	8	6	2	13	1	20

D6LED4HDM-6DLED435K8MD25

Ceiling to Floor Height (ft)	Multiple Units, Initial Footcandles, 30" Work Plane			
	Spacing is Maximum Over Work Plane, SMH= 0.4			
	Fixture Spacing (ft)	RCR 2	RCR 5	RCR 7
12	4.0	83	72	66
14	5.0	57	49	45
16	5.0	41	36	33
18	6.0	31	27	25
20	7.0	24	21	20



The Challenge

Traditionally, there have been a limited number of options for dimming interior spaces with high ceilings. HID's are difficult to dim and restrike is always an issue, while inefficient T4 quartz don't last long and put out a tremendous amount of heat. Plus, how do you change a T4 quartz light that sits high above multiple rows of seats in a playhouse when top access is limited?

The Answer

Prescolite's configurable optics can produce center beam candela power ideal for higher ceiling applications. Combined with Lutron dimming options, D4LED4, D6LED3 and D6LED4 fixtures offer the perfect solution for dimming capabilities in a wide variety of environments. And with a minimum life of 50,000 hours, these fixtures are virtually maintenance free, eliminating the need to continually change lamps in hard-to-reach areas.

ArchiTrak®

AKT6LED3

Prescolite's AKT6LED3 is a robust and high tech design that makes it perfect for a wide variety of commercial and retail accent applications. Rotates 360° horizontally and 180° vertically. Factory configurable optics allow for changes in beam spread appropriate for particular applications. The Light Engine can be used in up to a 50°C (122° F) ambient temperature environment and still maintain a 50,000 hour life. (Track applications must adhere to limits of the associated track systems).

Adapters available for Prescolite AKT series track, as well as options compatible with systems from most major manufacturers. This eliminates the need to replace the installed track when utilizing the AKT6LED in retrofit situations.

* Also available in White and Zet (Metallic Silver)



AKT6LED3

Product Family:	ArchiTrak
Type:	LED Trak Head
LED Configuration:	(10) white LEDs
Color Temperature:	2700K, 3500K, 4000K, 5000K
CRI:	70 Nominal or 90+ Nominal
Voltage:	120V-277V*
Input Watts:	14W
Lumen Output:	827

* 277V available when used with corresponding 277V track system





AKTSLED

Product Family:	ArchiTrak
Type:	LED Trak Head
LED Configuration:	AKTSLED3 has (10) 1-watt white LEDs while the AKTSLED4 has (10) 2.5 watt white LEDs
Color Temperature:	2700K, 3500K, 4000K, 5000K
CRI:	70 Nominal, 80+ Nominal or 90+ Nominal
Voltage:	120V-277V*
Input Watts:	AKTSLED3 14W; AKTSLED4 28W
Lumen Output:	Lumen Output up to 1249 Lumens (LED4)

* 277V available when used with corresponding 277V track system

ArchiTrak®

AKTSLED

Ideal for commercial and retail applications, AKTSLED3/4 track heads offer robust, power-efficient designs with high efficacy/high output benefits. In addition to a diecast aluminum fixture with electronic driver, the AKTSLED family also features factory configurable optics to allow for changes in beam spread (Spot, Medium and Flood) appropriate for particular applications.

The AKTSLED3/4 fixtures have a minimum 50,000-hour life based at 70% lumen maintenance – and also offer sustainability benefits while dramatically reducing maintenance and service costs over incandescent sources.

* Also available in White and Metallic Silver



PENDALUM™

SDPS6LED RDPS6LED



Pendalum™ LED luminaires are superior alternatives to traditional low bay fixtures and cylinders. Ten white LEDs provide a minimum of 50,000 hours at 70% average lumen maintenance. Newly upgraded design offers high output or high efficacy options. In addition, a multitude of optical configurations ensure the right choice for most applications. The luminaires are ideal for retail, commercial applications, schools, restaurants, and airport terminals. Suitable for damp locations.

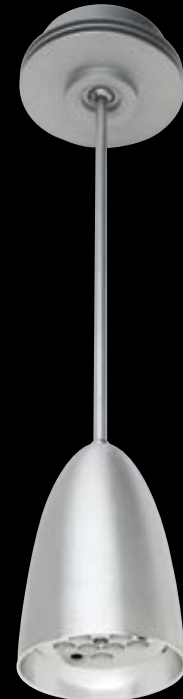
The Pendalum™ series was developed with the modern application of light in mind, offering consistent contemporary high-tech styling with nouveau craftsmanship and premium performance – always complementary to other lighting and architectural elements.

SDPS6LED3 RDPS6LED3

Product Family	Alum
Type	6" Surface or Recessed Mount LED Pendant
LED Configuration	(10) High Brightness 1-watt white LEDs
Color Temperature	2700K, 3500K, 4000K, 5000K
CRI	70 Nominal or 90+ Nominal
Dimming	0-10V Dimming to 20%
Voltage	120V or 277V
Input Watts	14W

SDPS6LED4 RDPS6LED4

Product Family	Alum
Type	6" Surface or Recessed Mount LED Pendant
LED Configuration	(10) High Brightness 2.5-watt white LEDs
Color Temperature	2700K, 3500K, 4000K, 5000K
CRI	70 Nominal or 80+ Nominal
Dimming	Not Available
Voltage	120V or 277V
Input Watts	28W





LD4 (DOWN)

Product Family	LiteForms
Type	4" LED Wall, Pendant, or Surface Mount Cylinder (6) High Brightness
LED Configuration	1-watt white or colored LEDs
LED Color	White, Blue, Red, Cyan, Green, or Amber
Dimming	Not Available
Voltage	120V
Input Watts	10W

LD4 (UP/DOWN)

Product Family	LiteForms
Type	4" LED Wall Mount Up/Down Cylinder
LED Configuration	(12) Lumileds Luxeon 1-watt white LEDs
LED Color	White, Blue, Red, Cyan, Green, or Amber
Dimming	Not Available
Voltage	120V
Input Watts	17W



LD6LED3

Product Family	LiteForms
Type	6" LED Wall, Pendant, or Surface Mount Cylinder
LED Configuration	(10) High Brightness 1-watt white LEDs
Color Temperature	2700K, 3500K, 4000K, 5000K
CRI	70 Nominal or 90+ Nominal
Dimming	0-10V Dimming to 20%
Voltage	120V or 277V
Input Watts	14W

LD6LED4

Product Family	LiteForms
Type	6" LED Wall, Pendant, or Surface Mount Cylinder
LED Configuration	(10) High Brightness 2.5-watt white LEDs
Color Temperature	2700K, 3500K, 4000K, 5000K
CRI	70 Nominal or 80+ Nominal
Dimming	Not Available
Voltage	120V or 277V
Input Watts	28W

LiteForms®

LD4

LD4 cylinders provide innovative solutions for illumination patterns on vertical surfaces, pathways, and high ceiling applications. The six or twelve LEDs come in an array of colors (white, red, amber, blue, or green) and provide a minimum of 50,000 hours at 70% lumen maintenance. They are suitable commercial, retail, and institutional applications, including building exterior, columns, and corridors. Suitable for wet locations.

LD6

LD6 cylinders are wall, surface, or pendant mounted suitable for commercial, retail, and institutional applications where maintenance costs are of primary concern. Unique light engine design produces uniform distribution by using Prescolite's American Matte™ finish. Newly upgraded design offers high output or high efficacy options. In addition, a wide range of LED color temperatures and CRI ensure the right choice for most applications.

Prescolite's LiteForms® cylinders are high quality, commercial grade, and easy to install – perfect for high ceiling applications.

LiteStep®

SLLED1

The SLLED1 has a low-profile die-cast aluminum faceplate and is a high output, high efficacy (10 lumens per watt), wider distribution 10-watt step light for a wide variety of interior and exterior commercial, residential, and retail applications. It is ideal for steps, walkways or exteriors and interiors of buildings where wide light distribution is needed closer to the ground.

COOL WHITE

# LEDs:	3
LED Type:	Citizen
Input Watts:	13W
Lumen Output:	127
Voltage	120V, 277V
HSG. Finish	White, Black, Zet, Bronze
Wet location listed	



SLLED2

The IP45 rated 10-watt recessed SLLED2 is energy efficient, low maintenance, high efficacy (7lumens per watt), has smooth light distribution, and a die-cast housing and faceplate. It is aesthetically pleasing for all interior and exterior applications – anywhere unobtrusive light is needed closer to the ground.

COOL WHITE

# LEDs:	3
LED Type:	Citizen
Input Watts:	13W
Lumen Output:	95
Voltage	120V, 277V
HSG. Finish	White, Black, Zet, Bronze
Wet location listed	



SLLED3

Offering adequate levels of light distribution, wattage consumption (6-watts), and efficiency, the SLLED3 is a primary level economical step light. It provides efficacy of 6 lumens per watt and is IP56 rated.

COOL WHITE

# LEDs:	2
LED Type:	Citizen
Input Watts:	9W
Lumen Output:	53
Voltage	120V, 277V
HSG. Finish	White, Black, Zet, Bronze
Wet location listed	



1 LED ARRAY

The heart of LED lighting is the LED array; a series of 2-3 high output LEDs precisely aimed to provide excellent light distribution.

2 HEAT SINK

Heavy aluminum heat sink which is designed to precisely maintain LED junction temperature to ensure long life and superior lumen maintenance.

3 FACE PLATE

Stylish Die-cast or punched aluminum face plate with silicone gasket to ensure a water-tight seal.

4 SECURITY

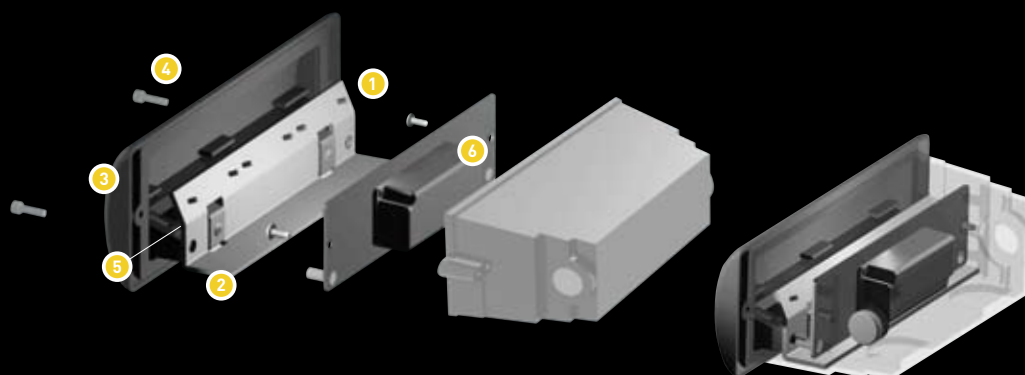
Face plate retained with two tamper-resistant screws. (Tool provided)

5 OPTICS

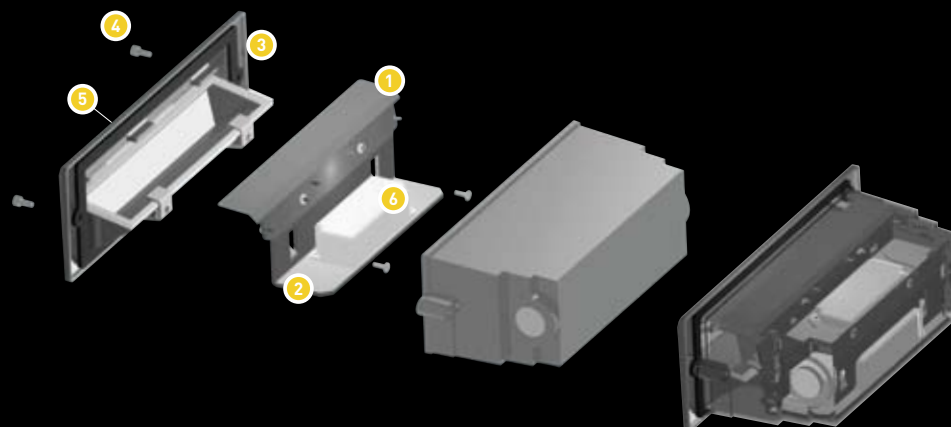
Diffused glass lens provides precise light distribution.

6 LED DRIVER

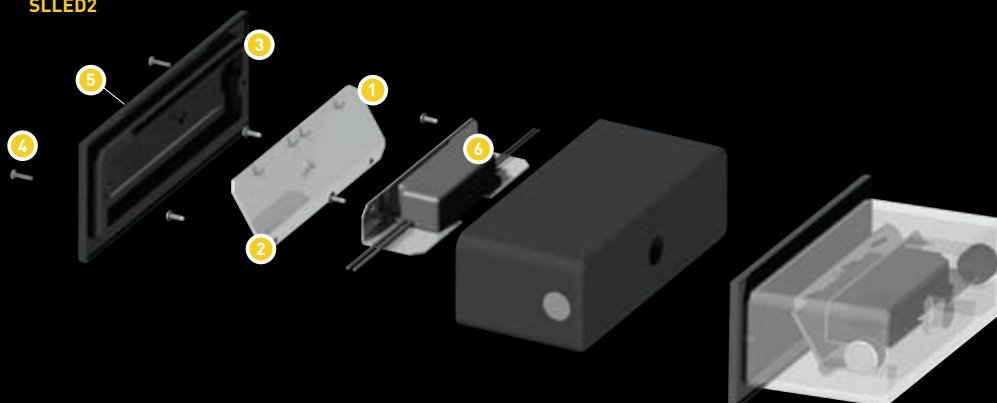
LED products feature electronic drivers.



SLLED1



SLLED2



SLLED3

T R I M S

The LED light engine ships as an integral element of the trim unit and is electrified by the housing by a simple quick connect plug and low voltage conductors. A wide variety of reflector finishes and colors is available to complement the performance and visual balance of the cutting edge Prescolite® LED lighting.

D4LED & D6LED

REFLECTOR FINISH

REFLECTOR COLOR

FLANGE OPTIONS



SPECULAR



CLEAR ALZAK



ANODIZED



SEMI-SPECULAR



CHAMPAGNE GOLD ALZAK



WHITE PAINT



AMERICAN MATTE



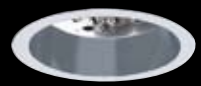
BLACK ALZAK



WHEAT ALZAK



LIGHT WHEAT ALZAK



PEWTER ALZAK



WHITE

LD6 & SDPS6LED/RDPS6LED

REFLECTOR FINISH

REFLECTOR COLOR



SPECULAR



CLEAR ALZAK



SEMI-SPECULAR



CHAMPAGNE GOLD ALZAK



BLACK ALZAK



WHEAT ALZAK



LIGHT WHEAT ALZAK



PEWTER ALZAK

SIGNOS® 6

The D6LED downlight is compatible with Prescolite's Signos® 6" decorative trim elements to add architectural flair to your downlighting applications.





EPAct

Prescolite – an environmentally responsible manufacturer

Learn more about our commitment to providing earth-friendly, LED solutions
LED Recycle Program – In addition to designing high quality LEDs that help to reduce energy consumption in buildings, we are happy to be a green resource by providing the following recycling options at the end of the LED's lifespan.

Contact the Prescolite team – E-mail [HYPERLINK "mailto:prescolitemarketing@prescolite.com"](mailto:prescolitemarketing@prescolite.com) prescolitemarketing@prescolite.com. The Prescolite team can provide you with authorization and shipping information to let Prescolite recycle your LED fixture.

If you prefer to recycle locally, visit Earth911.com.

EPAct –

Energy efficiency is a global concern and the 2005 Energy Policy Act provides market-based incentives and solutions to reduce costs and enhance overall green practices. By updating your lighting systems with Prescolite's solid-state fixtures, you can reduce your overall lighting costs. Plus, you can display your commitment to environmental stewardship by using LED alternatives, which have been tested to significantly reduce energy consumption.

Additionally, the 2005 Energy Policy Act contains a variety of tax credits and deductions for businesses and consumers.

Prescolite rebate guidance and assistance – Prescolite offers proactive rebate guidance and assistance. For more information on rebates in your area, e-mail the Prescolite team at [HYPERLINK "mailto:prescolitemarketing@prescolite.com"](mailto:prescolitemarketing@prescolite.com) prescolitemarketing@prescolite.com.

California Title 24-

California's Energy Efficiency Standards for Residential and Nonresidential Buildings. – The Energy Efficiency Standards for Residential and Nonresidential Buildings were established in 1978 in response to a legislative mandate to reduce California's energy consumption. The standards are updated periodically to allow consideration and possible incorporation of new energy efficiency technologies and methods.

California's building efficiency standards (along with those for energy efficient appliances) have saved more than \$56 billion in electricity and natural gas costs since 1978. It is estimated the standards will save an additional \$23 billion by 2013.

ENERGY STAR® -

Among all consumer emblems, such as the Good Housekeeping Seal and Consumer Reports, the ENERGY STAR mark has one of the highest levels of influence on consumer purchasing. Lighting products that have earned the ENERGY STAR meet the government's strict energy efficiency criteria and save energy without compromising on product quality and performance. They use less energy, lowering consumers' utility bills while preventing greenhouse gas emissions.

On September 30, 2008, the ENERGY STAR Solid-State Lighting (SSL) Luminaire program went into effect. The ENERGY STAR SSL Program Requirements are intended for general illumination products not previously covered by any ENERGY STAR product category.

Solid-state lighting differs fundamentally from traditional lighting technologies in terms of materials, drivers, system architecture, controls, and photometric properties. To accommodate these differences, new test procedures and industry standards have been developed.

Prescolite offers a variety of ENERGY STAR qualified SSL products that meet and exceed the latest industry standards. To find out more about ENERGY STAR SSL Program and requirements for Prescolite products with the ENERGY STAR mark, visit the ENERGY STAR web site at <http://www.energystar.gov>.



701 Millennium Boulevard
Greenville, SC 29607
Phone: (864) 678-1000
www.prescolite.com

Copyright © 2011 Prescolite, Inc., a division of Hubbell Lighting, Inc.
All rights reserved. Printed in USA.

PR1065E 6/11



Hubbell Lighting, Inc.